

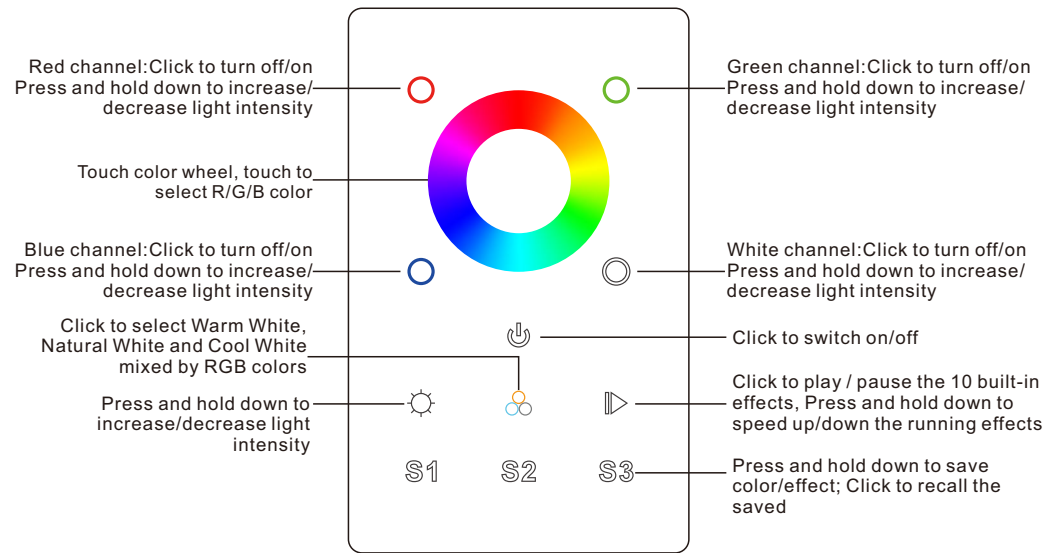
Wall Mounted RGBW DMX512 +RF Controller

09.2812UDR.04250

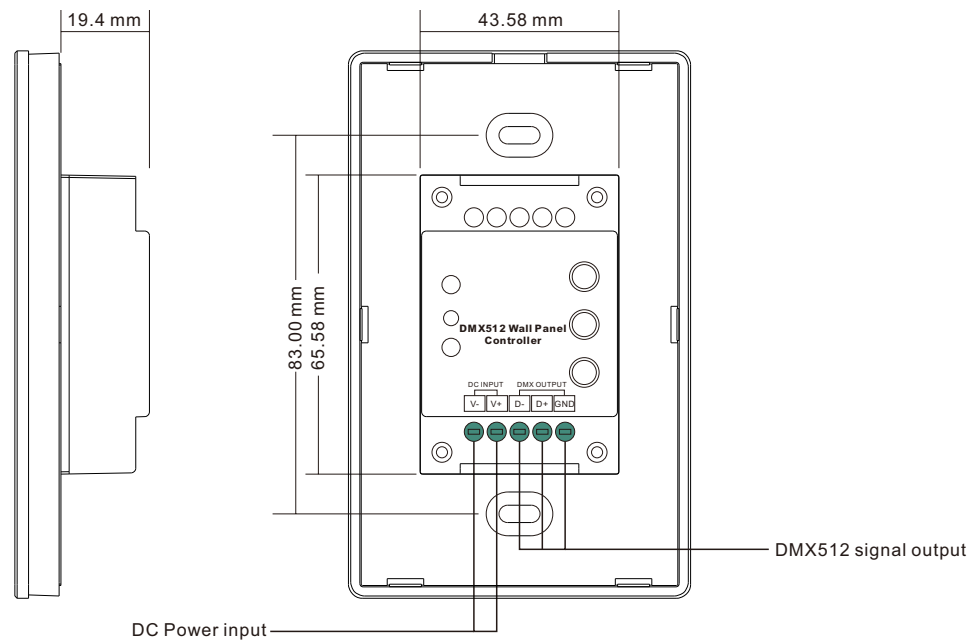


Important: Read All Instructions Prior to Installation

Function introduction



Front side



Back side

Product Data

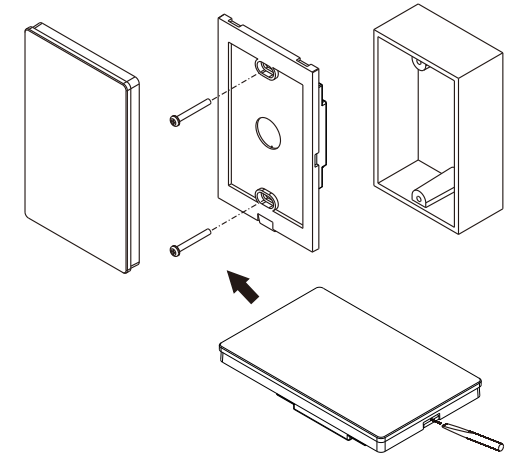
Output Signal	DMX512 signal
Power Supply	12-24VDC
Power consumption	< 20 mA
Operating temperature	0-40°C
Relative humidity	8% to 80%
Dimensions	75x120x29.1mm

- Touch sensitive
- Glass interface(white & black)
- Standard DMX512 Signal output
- Can send RF signal, control the RF receiver
- Radio frequency: 916.5MHz
- Control RGBW color
- Control 1 zone/area
- Waterproof grade: IP20

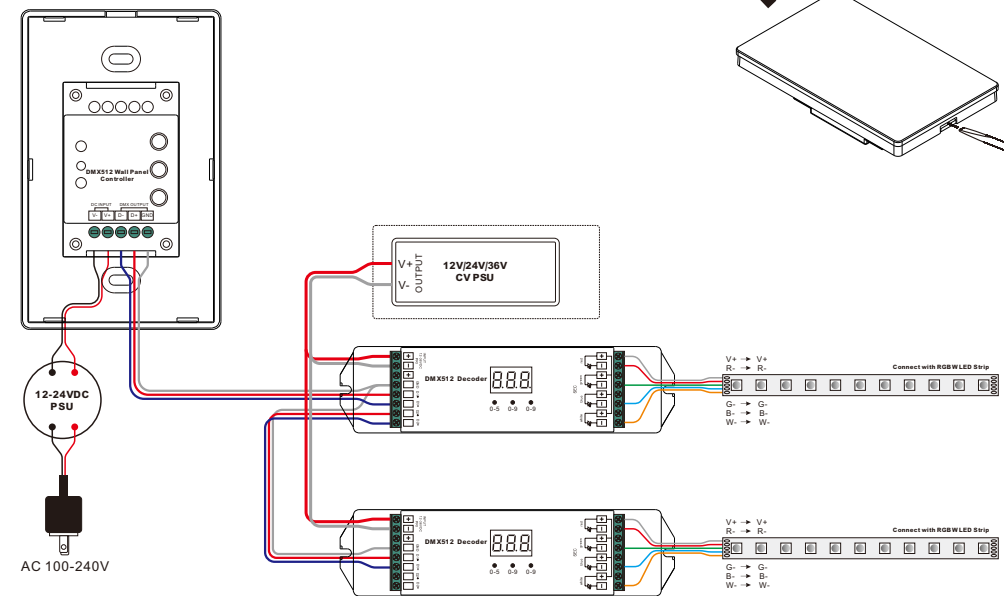
Safety & Warnings

- DO NOT install with power applied to device.
- DO NOT expose the device to moisture.

Installation




Wiring diagram

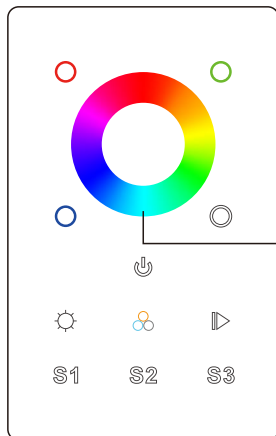


Set DMX Address

One DMX master controller can control many DMX Decoders, set all DMX decoders' address as 001.
Note: one DMX Decoder has 4 channels, so it occupies 4 DMX addresses 001, 002, 003, 004.

Pair with RF receiver

1. Do wiring the wall panel & RF receiver according to wiring diagram (please refer to the instruction of RF receiver that you would like to pair with)
2. Power on, then touch the button  to turn on the controller, indicator of the controller turned blue



Step 1: Click the **"Learning Key"** button on RF receiver or re-power on the receiver three times continuously to set it into pairing status

Step 2: Touch the color wheel, LED lights connected with the RF receiver flicker once means the receiver is paired with the wall panel successfully.